



Stratified+ | **R**
RESILIENT
PLANK

LVT | 12 X 24 / 6 X 24

STRATIFIED+ 12 X 24 in frost / STRATIFIED+ 6 X 24 in capri and citrine / right: capri, citrine, plateau, shale and amber



STRATIFIED⁺

ENCOMPASSING A SUBTLE HINT OF PATTERNING SEEN IN THE SEDIMENTARY LAYERS OF ROCKS PAIRED WITH THE COLORFUL BEAUTY OF MINERALS AND QUARTZ, PATCRAFT'S **STRATIFIED+** IS INSPIRED BY THE STRIATIONS AND VISUAL TEXTURES SEEN IN THE NATURAL WEATHERING PROCESS OF STONE.

STRATIFIED+



STRATIFIED+ 12X24 in mist / installed herringbone

COLORWAYS 12 X 24 | I322V / 6 X 24 | I321V



00100 mist



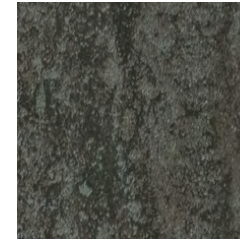
00200 sand



00500 frost



00550 pewter



00590 graphite



00750 plateau



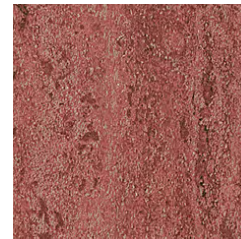
00770 dusky



00790 shale



00980 amethyst*



00880 garnet*



00850 amber*



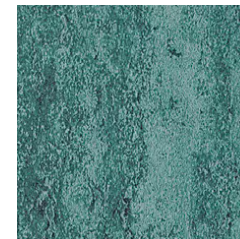
00620 citrine*



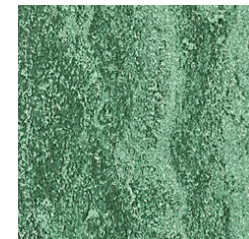
00480 sapphire*



00430 aqua*



00450 capri*



00380 emerald*

*Brights are only available in the 6 X 24 size (style I321V)



PRODUCT SPECIFICATIONS

STRATIFIED+ | resilient plank

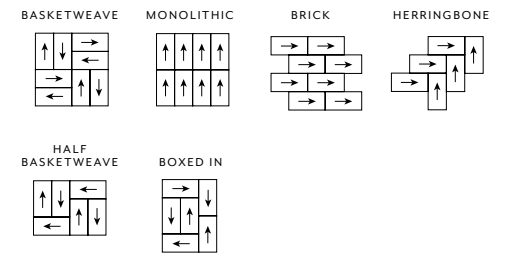
12 X 24
style / I322V

product size 12" x 24" | 30.48 cm x 60.96 cm
 construction luxury vinyl tile with fiberglass
 total thickness .098" | 2.5mm
 finish ExoGuard™
 installation glue down

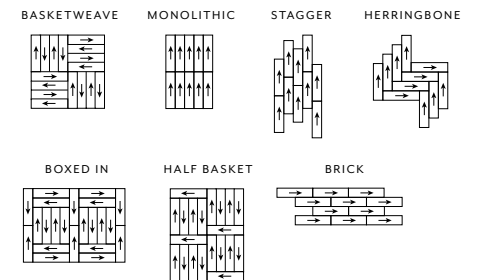
6 X 24
style / I321V

product size 6" x 24" | 15.2 cm x 60.96 cm
 construction luxury vinyl tile with fiberglass
 total thickness .098" | 2.5mm
 finish ExoGuard™
 installation glue down

INSTALLATION METHODS | 12 X 24



INSTALLATION METHODS | 6 X 24



STRATIFIED+ 12 X 24 in dusky /
 STRATIFIED+ 6 X 24 in shale and plateau

For full specifications and color, please [visit this collection on the website.](#)