



# Tangible Hue

COLLECTION

---

**POSSIBLE**

style 10490  
colors 00522, 00554, 00552

**REALIZE**

style 10489  
colors 00550

patcraft®

MODULAR  
Tangible Hue COLLECTION



---

**POSSIBLE**

style 10490  
colors 00550, 00520, 00590

MODULAR

Tangible Hue COLLECTION



---

**POSSIBLE**

style I0490  
colors 00550, 00552,  
00554, 00522

**REALIZE**

style I0489  
colors 00552

MODULAR

Tangible Hue COLLECTION



---

**ACHIEVE**

style 10491  
color 00550

**REALIZE**

style 10489  
colors 00550

MODULAR

Tangible Hue COLLECTION



---

**POSSIBLE**  
style 10490  
colors 00552

MODULAR  
Tangible Hue COLLECTION



---

**ACHIEVE**  
style 10491  
color 00550

# Product Specifications | MODULAR

## Achieve

style **I0491**  
tile size **24" x 24" | 61 CM x 61 CM**

pile fiber & type **SOLUTION Q EXTREME® NYLON**  
tufted yarn weight (ASTM-D5848) **19 OZ. | 644.2 G/M<sup>2</sup>**  
dye method **100% SOLUTION DYED**  
gauge **1/12" | 47.2 PER 10 CM**  
stitches (ASTM-D5793-95) **10 PER INCH | 41 PER 10 CM**  
total thickness (ASTM-D6860) **.239" | 6.07 MM**  
density **7,685 | 11.87 KILOTEX**  
secondary backing **ECOWORX® TILE**

## Possible

style **I0490**  
tile size **24" x 24" | 61 CM x 61 CM**

pile fiber & type **SOLUTION Q EXTREME® NYLON**  
tufted yarn weight (ASTM-D5848) **19 OZ. | 644.2 G/M<sup>2</sup>**  
dye method **100% SOLUTION DYED**  
gauge **1/12" | 47.2 PER 10 CM**  
stitches (ASTM-D5793-95) **10 PER INCH | 41 PER 10 CM**  
total thickness (ASTM-D6860) **.232" | 5.89 MM**  
density **6,393 | 11.86 KILOTEX**  
secondary backing **ECOWORX® TILE**

## Realize

style **I0489**  
tile size **24" x 24" | 61 CM x 61 CM**

pile fiber & type **SOLUTION Q EXTREME® NYLON**  
tufted yarn weight (ASTM-D5848) **19 OZ. | 644.2 G/M<sup>2</sup>**  
dye method **100% SOLUTION DYED**  
gauge **1/12" | 47.2 PER 10 CM**  
stitches (ASTM-D5793-95) **10 PER INCH | 41 PER 10 CM**  
total thickness (ASTM-D6860) **.232" | 5.89 MM**  
density **6,393 | 11.86 KILOTEX**  
secondary backing **ECOWORX® TILE**

## Recommended Installation Methods

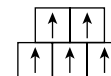
Monolithic



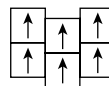
1/4 Turn



Brick



Ashlar



Random

