

TRANSFORM SPACE



Linocut |



LUXURY VINYL TILE WITH FIBERGLASS

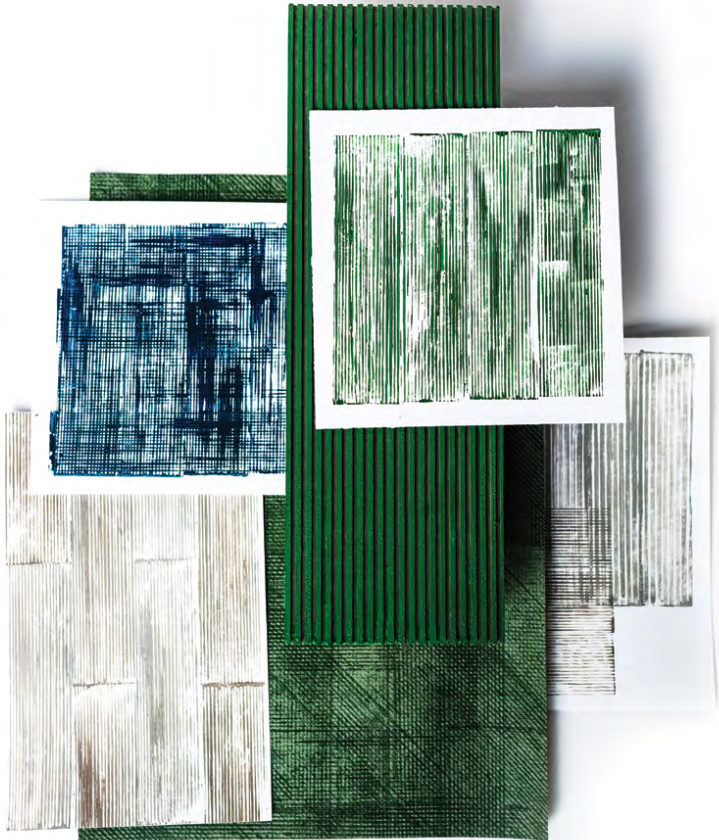
LINOCUT in mirror, black and relief

LOOKBOOK

patcraft®



LINOCUT in mirror / installation in brick

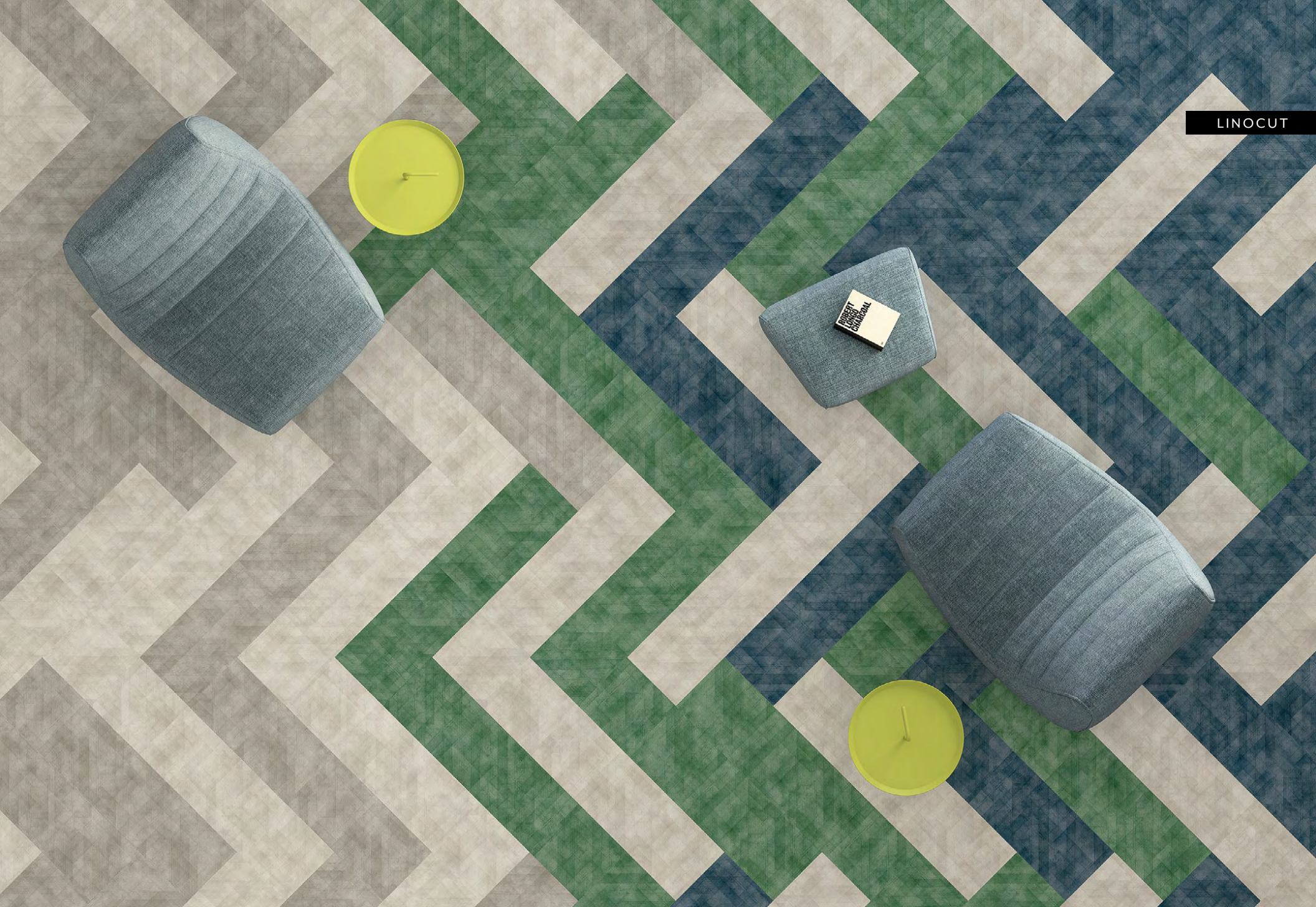


LINOCUT



LINOCUT in baren / with LINEAR TENSION in cobblestone
/ installation in stagger

LINOCUT



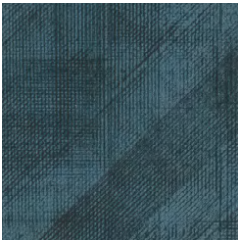
LINOCUT in mirror, block, reserve and baren / installation in herringbone



COLORWAYS I560V



00370 reverse



00450 etch



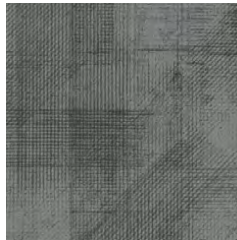
00490 baren



00530 carve



00550 chisel



00575 brayer



00650 proof



00250 press



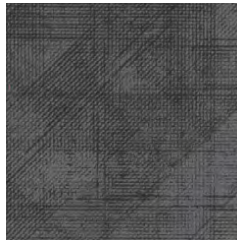
00100 relief



00500 mirror



00750 block



00590 inked



00860 monoprint

PRODUCT SPECIFICATIONS

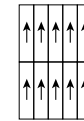
LINOCUT | resilient

style / I560V

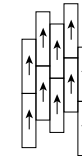
product size	9" x 36" 22.86 cm x 91.44 cm
construction	LVT with Fiberglass
total thickness	.197" 5mm
wear layer	.020" 20mil (.5mm)
finish	ExoGuard™
installation	glue down

INSTALLATION METHODS

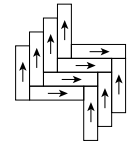
MONOLITHIC



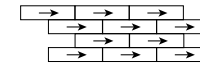
STAGGER



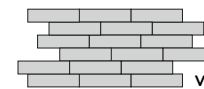
HERRINGBONE



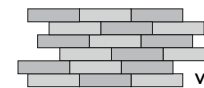
BRICK



COLOR VARIATIONS



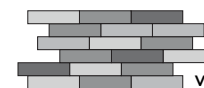
V1



V2



V3



V4

Shade and texture can vary slightly or significantly from piece to piece within a color. V1 shade variation has little or no change from piece to piece where a V4 will have a large variety of color and/or texture changes. **All colors in Linocut are a V1.**

LINOCUT in mirror, block, relief and brayer /
installation in brick

For full specifications and color, please [visit this style on the website.](#)