



Spatial Palette



REWORX™ HYBRID, NON-WOVEN COMPOSITE

SPATIAL PALETTE in fog, peacock and evergreen / installed in stagger

SPATIAL PALETTE



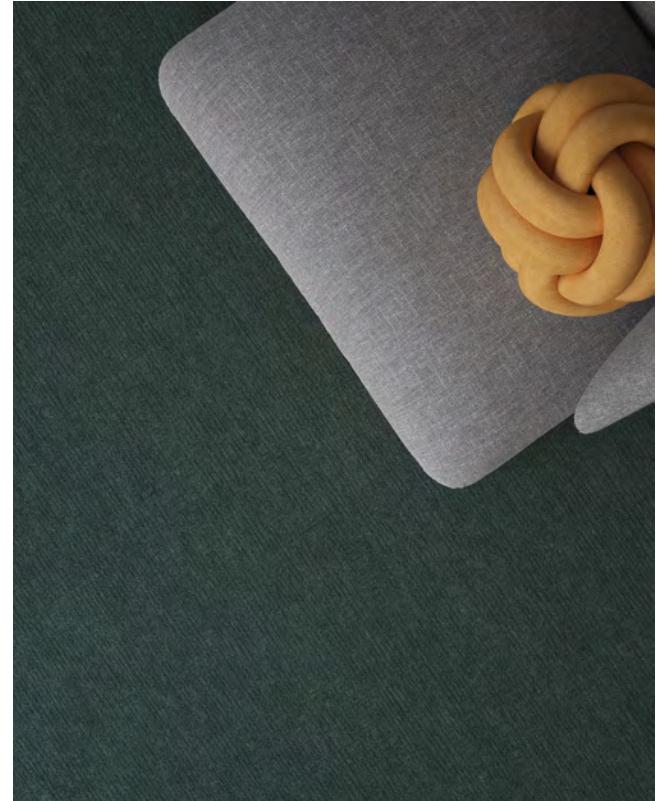
SPATIAL PALETTE in marigold and haze /
installed in stagger



SPATIAL PALETTE



SPATIAL PALETTE in evergreen and haze / installed in stagger



SPATIAL PALETTE



SPATIAL PALETTE in fog, haze and smoke /
installed in stagger

inside the design /

Made of a 100% PET that can also be recycled in its entirety, it performs like a hard surface with the comfort of carpet.



100% PET+
FULLY RECYCLABLE



CARBON
NEUTRAL



IMPROVED ACOUSTICS
+ ABSORBS SOUND



EASY TO CLEAN



ENHANCED
ROLLER MOBILITY



Highlighting our continued efforts towards sustainable innovation, **Spatial Palette** is a design-forward, Hybrid product made of approximately 51% recycled content. **Spatial Palette** is the first collection to launch on the innovative new platform, **ReWorx**, a 100% PET product that can be recycled in its entirety. Each 12 x 48 inch plank within the collection contains post-consumer recycled content from approximately 27 recycled bottles.



A hand is shown holding a rectangular piece of yellow fabric with a fine, woven texture. The hand is positioned over a collection of various fabric swatches and bowls of colorful particles. The swatches include shades of green, grey, and brown, some with embossed patterns. The bowls contain small, irregularly shaped particles in various colors, including red, blue, green, and black. The background is a white surface with several fabric swatches scattered around.

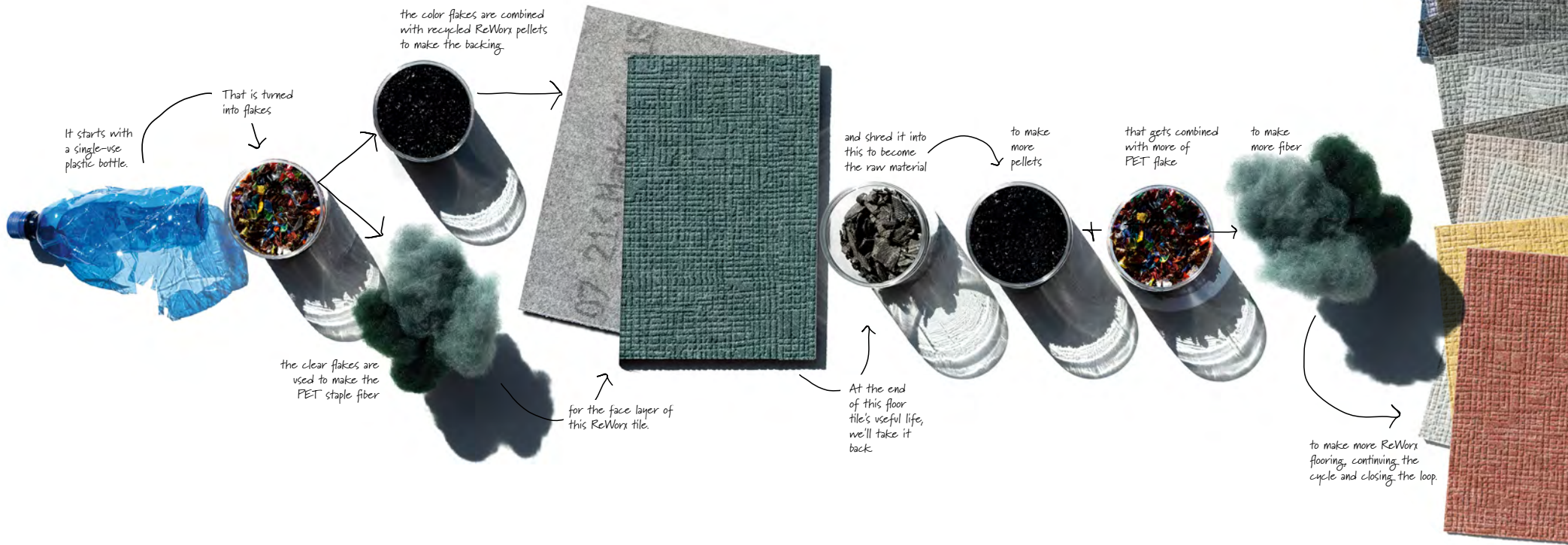
SPATIAL PALETTE

With an embossed grid visual, the heathered cross-hatch design contributes to a feeling of warmth and tactility. Available in 16 colors ranging from warm to cool neutrals, the collection includes jewel tones for accents and bright pops of color for wayfinding, branding and dynamic design.

REWORX:

WHERE DURABILITY MEETS
SUSTAINABILITY TO CLOSE THE LOOP.

ReWorx is a hybrid flooring solution combining the durability of a hard surface with the comfort of a soft surface. Using high-recycled content from single-use plastic bottles, the ReWorx platform represents a regenerative, closed loop approach to sustainability. A 100% PET product minimizes landfill disposal and reduces the use of virgin materials creating a regenerative platform for future use.



SPATIAL PALETTE



SPATIAL PALETTE in marigold, haze and sienna / installed in stagger

COLORWAYS 10617



00100 stonecrest



00120 weathered



00195 truffle



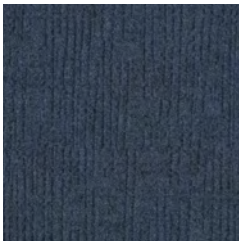
00255 marigold



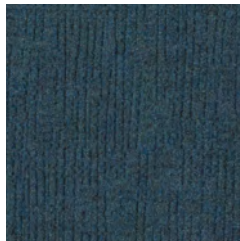
00340 evergreen



00395 teal



00445 cadet



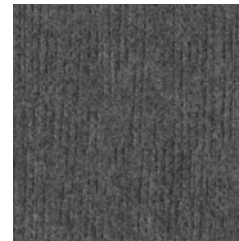
00460 peacock



00500 fog



00530 haze



00550 smoke



00580 ash



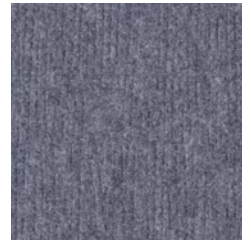
00590 carbon



00610 sienna



00790 jacobean



00905 joni

COORDINATING PALETTE WARM NEUTRAL

SPATIAL PALETTE



- 1 SPATIAL PALETTE 10617 in sienna
- 2 SPATIAL PALETTE 10617 in truffle
- 3 SPATIAL PALETTE 10617 in weathered
- 4 CUBE & COLOUR 10427 in clove
- 5 ETCHED 10512 in artfully rusted
- 6 TIMBER GROVE II 1421V in hedgerow
- 7 RESTON 1588V in carob
- 8 SELVAGE 10584 in linen-rose
- 9 MEANING 1446V in respond
- 10 SURFACE STRIATION COLOR 10558 in gypsum
- 11 BENJAMIN MOORE PAINT in Fading Twilight
- 12 BENJAMIN MOORE PAINT in Taos Taupe

COORDINATING PALETTE COOL GRAY

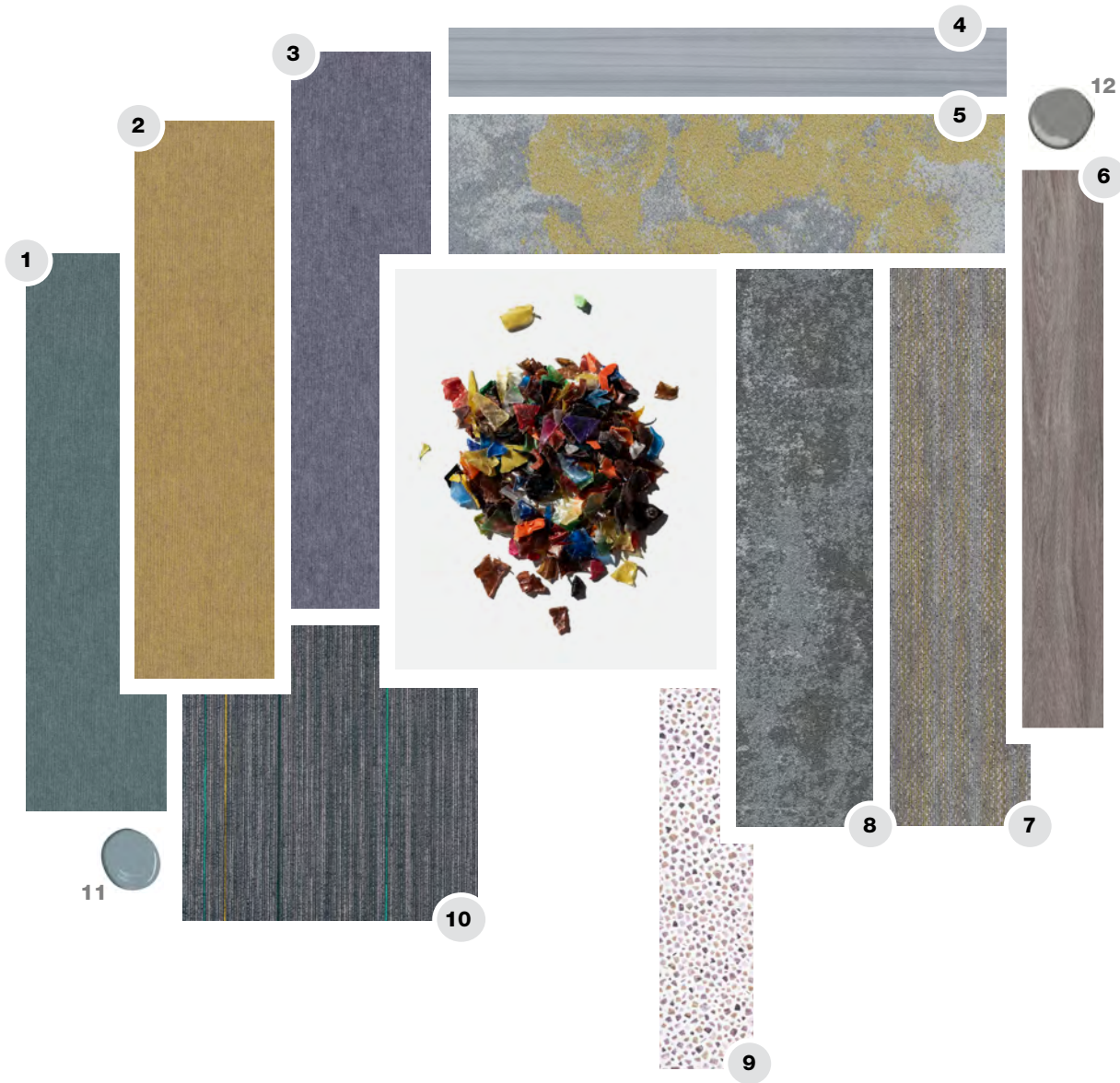
SPATIAL PALETTE



- 1 SPATIAL PALETTE 10617 in peacock
- 2 SPATIAL PALETTE 10617 in haze
- 3 SPATIAL PALETTE 10617 in smoke
- 4 TIMBER GROVE II 1421V in cactus
- 5 MARK MAKING 1509V in cascade
- 6 RESTON 1588V in ermine
- 7 BINARY 10537 in emerald-smoke
- 8 COLOUR EFFECT 10570 in teal-azure
- 9 HEIRLOOM TWEED 10549 in turkish teal
- 10 SURFACE STRIATION COLOR 10558 in tourmaline
- 11 BENJAMIN MOORE PAINT in Overcoat
- 12 BENJAMIN MOORE PAINT in Americana

COORDINATING PALETTE BRIGHTS

SPATIAL PALETTE



- 1 SPATIAL PALETTE 10617 in teal
- 2 SPATIAL PALETTE 10617 in marigold
- 3 SPATIAL PALETTE 10617 in joni
- 4 TIMBER GROVE II 1421V in silver
- 5 FLORACULTURE 10529 in marigold
- 6 RESTON 1588V in umber
- 7 SELVAGE 10584 in satin-lemon
- 8 ETCHED 10512 in oxidized surface
- 9 ITERATE 1638V in shift
- 10 SURFACE STRIATION COLOR 10558 in jade
- 11 BENJAMIN MOORE PAINT in Water's Edge
- 12 BENJAMIN MOORE PAINT in Cinder



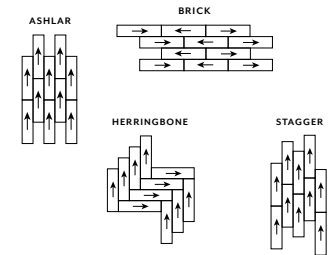
PRODUCT SPECIFICATIONS

SPATIAL PALETTE | modular

style / 10617

construction	Non-Woven Composite
dye method	100% Solution Dyed
product size	12" x 48" 30.5 cm x 122 cm
total thickness	0.172 inch 4.37mm
total weight	75 oz/yd ² 2540 g/m ²
fiber type	100% PET
backing type	High Density Non-Woven PET Composite
installation	Glue Down
warranty	15 Year Commercial Limited

INSTALLATION METHODS



SUSTAINABILITY CERTIFICATIONS

CRADLE TO CRADLE CERTIFIED®
BRONZE V3.1

ENVIRONMENTAL PRODUCT DECLARATION (EPD)
CERTIFIED

NSF 140
CERTIFIED

CRI GREEN LABEL PLUS (GLP)
GLP 0082

ENVIRONMENTAL GUARANTEE
RE[TURN]® RECLAMATION PROGRAM

TOTAL RECYCLED CONTENT
51%

**On average, 61 plastic bottles are used to create the material ingredients to make a square yard of ReWorx.*

SPATIAL PALETTE in haze, truffe and sienna
installed in brick