

TRANSFORM SPACE



# Create in Place |

ITERATE / ENERGIZE / REACH

**R**  
RESILIENT  
PLANK

ITERATE in change / installation in stagger

LOOKBOOK

patcraft®



## IN THE ABSTRACT /

For Create In Place, product designer Amanda Hopkins set out to design a hard surface collection that was directly connected to original artwork. Inspired to create a concrete and terrazzo-inspired visual with an artistic approach, Amanda dabbed watercolor paint in various brush strokes, sizes and shapes to create the styles for the collection.



CREATE IN PLACE



ENERGIZE in gather /  
installation in stagger





CREATE IN PLACE

CREATE IN PLACE



REACH in connect and refine /  
installation in herringbone



ITERATE in shift /  
installation in stagger

CREATE IN PLACE



REACH in connect with GLOBAL HAND area rug in twill /  
installation in herringbone



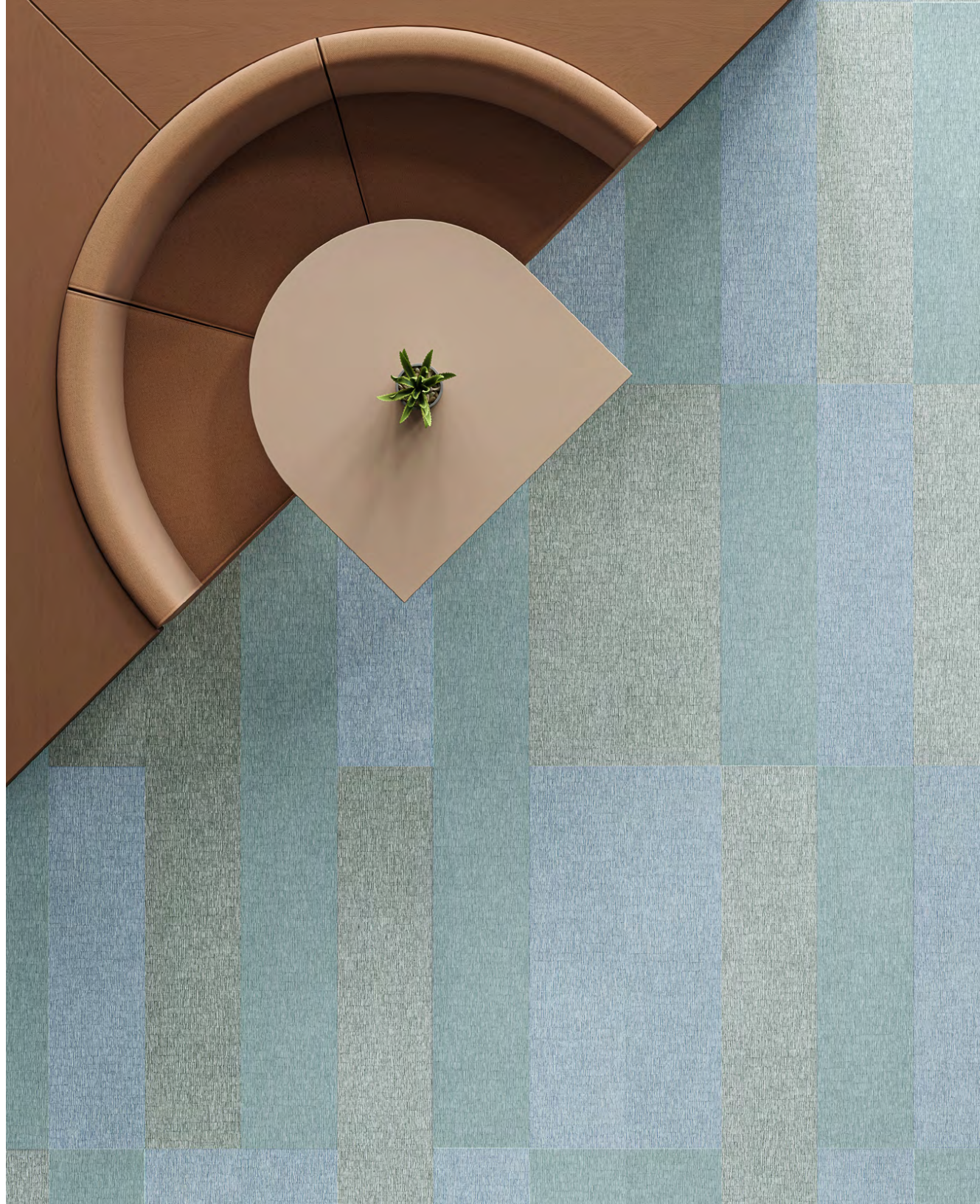
CREATE IN PLACE

ENERGIZE in gather / REACH in integrate, shift and change / installation in stagger



CREATE IN PLACE

ENERGIZE in integrate, change and adapt /  
installation in monolithic



COLORWAYS 1638V | ITERATE



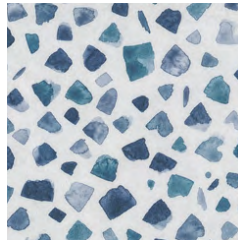
00650 scope



00900 shift



00385 change



00400 integrate



00485 explore



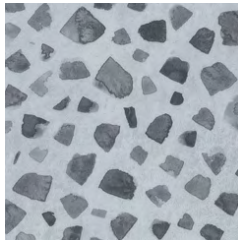
00700 intention



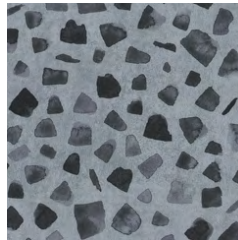
00500 gather



00350 adapt

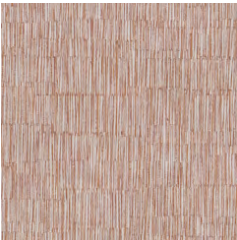


00530 connect



00585 refine

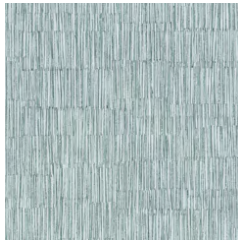
COLORWAYS 1602V | ENERGIZE



00650 scope



00900 shift



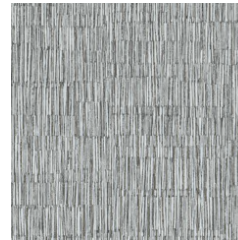
00385 change



00400 integrate



00485 explore



00700 intention



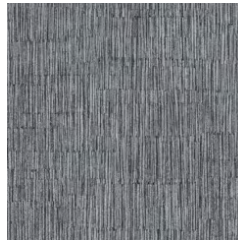
00500 gather



00350 adapt



00530 connect



00585 refine

COLORWAYS 1601V | REACH

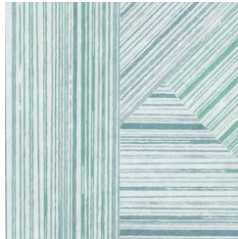
The style Reach incorporates a unique line patterning that is composited together at different angles. Cut swatches may not show all of the color variation in the plank. We recommend ordering a full size sample to see the full breadth of color.



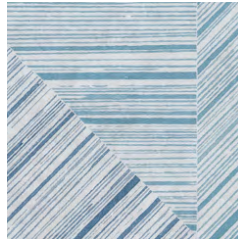
00650 scope



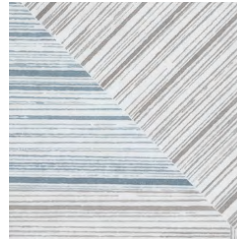
00900 shift



00385 change



00400 integrate



00485 explore



00700 intention



00500 gather



00350 adapt



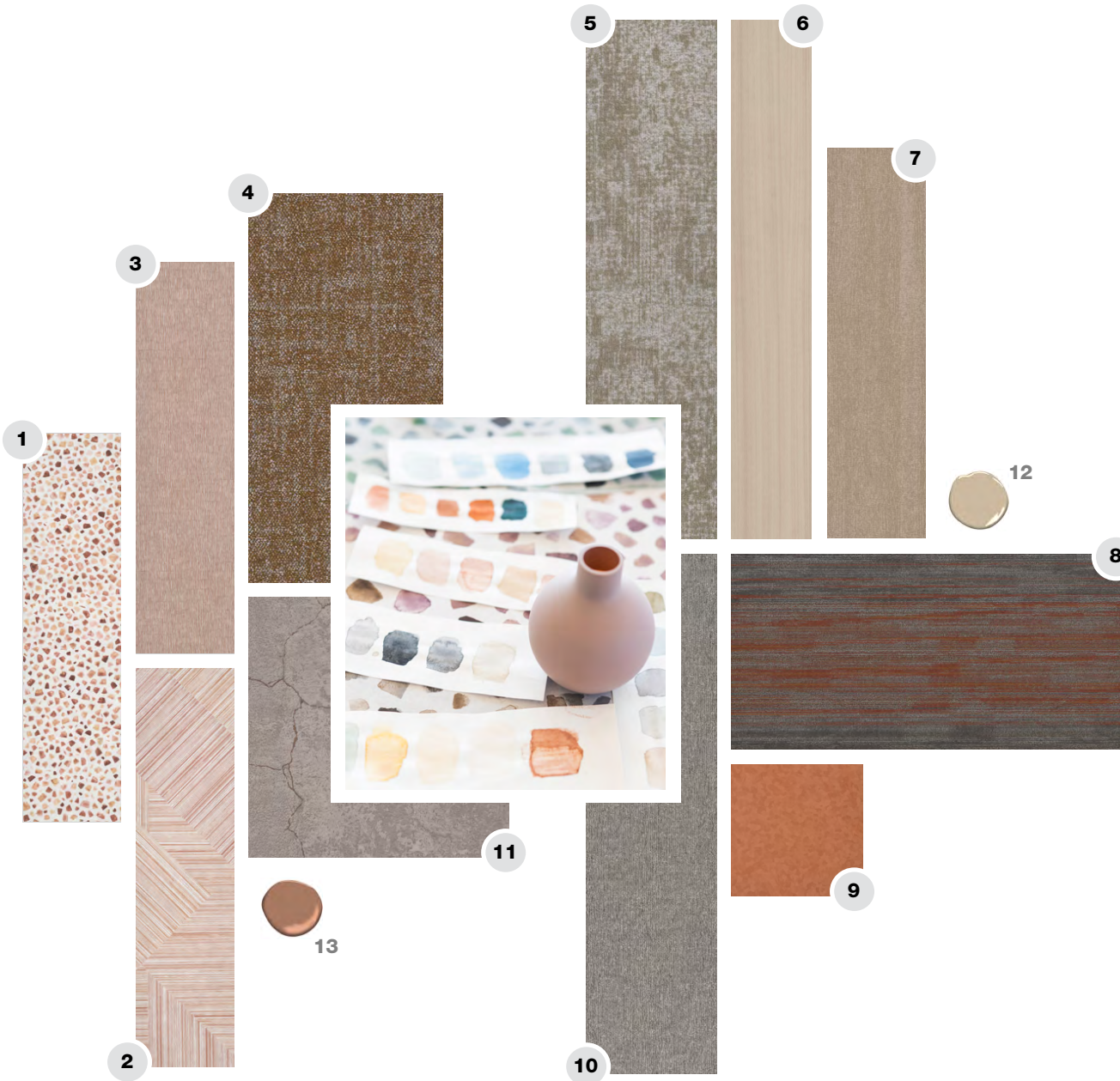
00530 connect



00585 refine

# COORDINATING PALETTE TERRACOTTA

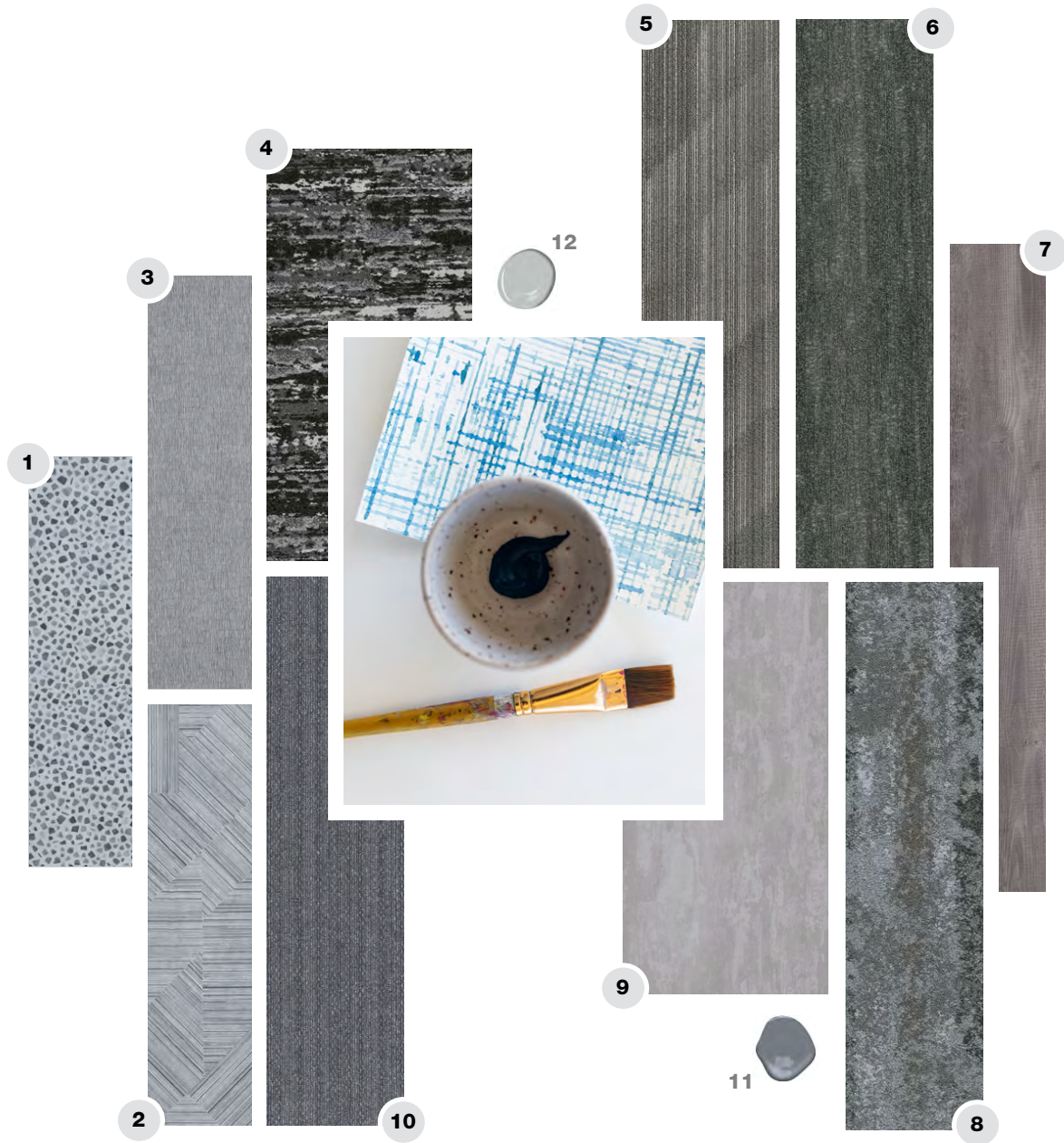
CREATE IN PLACE



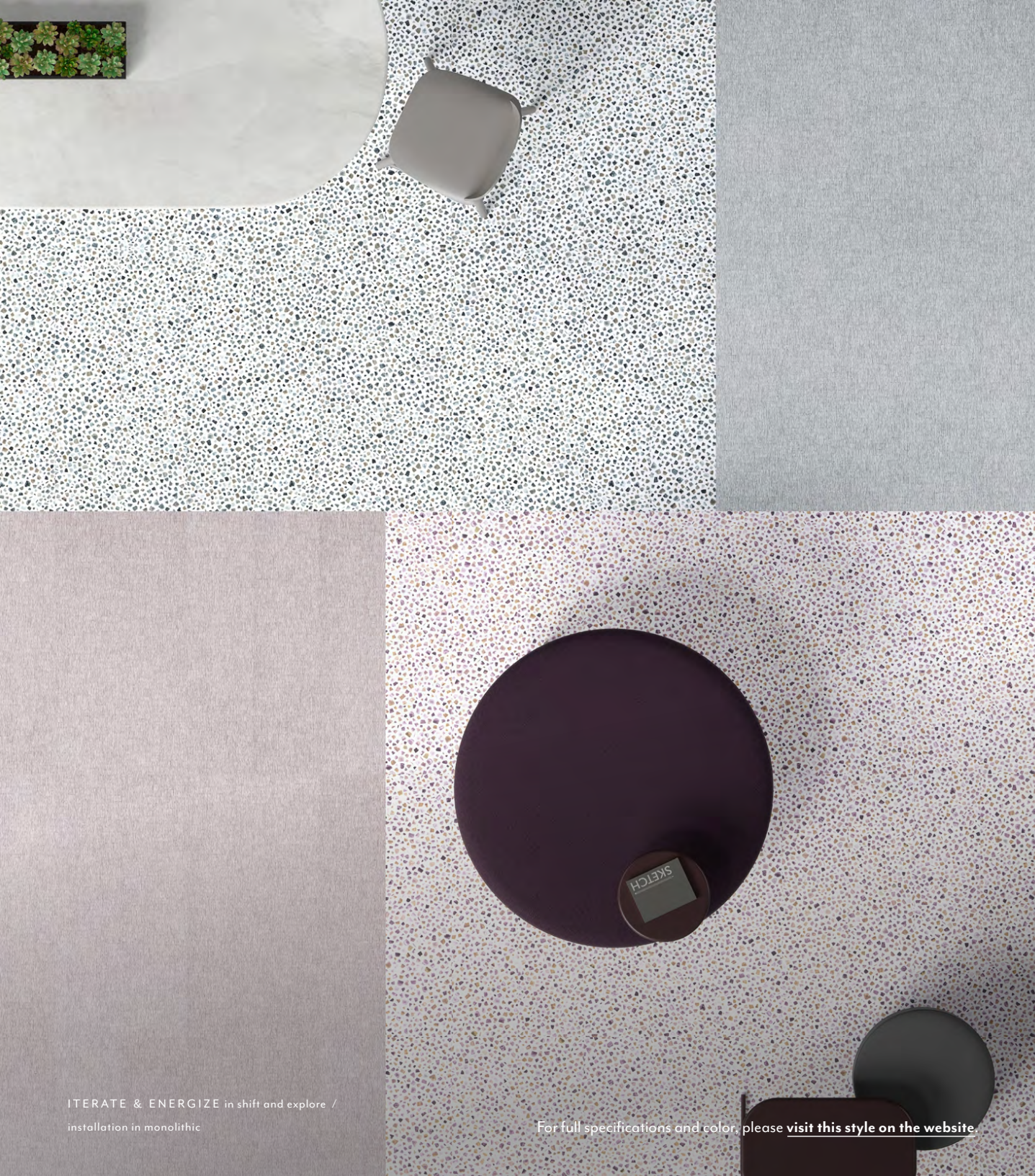
- 1 ITERATE I638V in scope
- 2 REACH I601V in scope
- 3 ENERGIZE I602V in scope
- 4 HEIRLOOM TWEED I0549 in rust wash
- 5 TOPSTITCH I0539 in greige
- 6 ANEW I543V in raw
- 7 WOODEN WARP I484V in loom
- 8 LINEAR TENSION I0541 in rust
- 9 ADMIX ENCORE I429V in sunlit bronze
- 10 CARVE I0566 in serenity
- 11 MOLTEN I478V in quartz
- 12 BENJAMIN MOORE PAINT in Bar Harbor Beige
- 13 BENJAMIN MOORE PAINT in Fox Run

# COORDINATING PALETTE GREY

CREATE IN PLACE



- 1 ITERATE I638V in connect
- 2 REACH I601V in connect
- 3 ENERGIZE I602V in connect
- 4 HARMONIOUS I0562 in affinity
- 5 SLOPE I0467 in elevation
- 6 ALLOY SHIMMER I0421 in patina titanium
- 7 SPLITWOOD I466V in ashen gold
- 8 PATINA I0511 in oxidized surface
- 9 MONOCHROME MATTE I462V in terra
- 10 INTERLOCK I0583 in canvas
- 11 BENJAMIN MOORE PAINT in Smoke Gray
- 12 BENJAMIN MOORE PAINT in Eternity



**PRODUCT SPECIFICATIONS**

CREATE IN PLACE | resilient

**ITERATE**

style / 1638V

|                 |                                |
|-----------------|--------------------------------|
| product size    | 9" x 36"   22.86 cm x 91.44 cm |
| construction    | LVT with Fiberglass            |
| total thickness | .197"   5mm                    |
| wear layer      | .020"   20mil (.5mm)           |
| finish          | ExoGuard™                      |
| installation    | glue down                      |

**ENERGIZE**

style / 1602V

|                 |                                |
|-----------------|--------------------------------|
| product size    | 9" x 36"   22.86 cm x 91.44 cm |
| construction    | LVT with Fiberglass            |
| total thickness | .197"   5mm                    |
| wear layer      | .020"   20mil (.5mm)           |
| finish          | ExoGuard™                      |
| installation    | glue down                      |

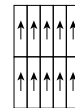
**REACH**

style / 1601V

|                 |                                |
|-----------------|--------------------------------|
| product size    | 9" x 36"   22.86 cm x 91.44 cm |
| construction    | LVT with Fiberglass            |
| total thickness | .197"   5mm                    |
| wear layer      | .020"   20mil (.5mm)           |
| finish          | ExoGuard™                      |
| installation    | glue down                      |

**INSTALLATION METHODS**

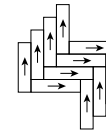
MONOLITHIC



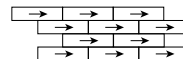
STAGGER



HERRINGBONE



BRICK



ITERATE & ENERGIZE in shift and explore /  
installation in monolithic

For full specifications and color, please [visit this style on the website.](#)